

Like Breath on Glass: Whistler, Inness, and the Art of Painting Softly
June 22 through October 19, 2008
Sterling and Francine Clark Art Institute, Williamstown, MA

Sample Images Available for Media Use

The following images are available as 300 dpi color jpeg files for press use in connection with the exhibition. To request images, contact 413-458-0471 or pr@clarkart.edu.



Nocturne in Blue and Silver: The Lagoon, Venice, 1879-80
by James McNeill Whistler
Oil on canvas, 19 3/4 x 25 3/4 in.
Museum of Fine Arts, Boston. Emily L. Ainsley Fund.
Courtesy, Museum of Fine Arts, Boston



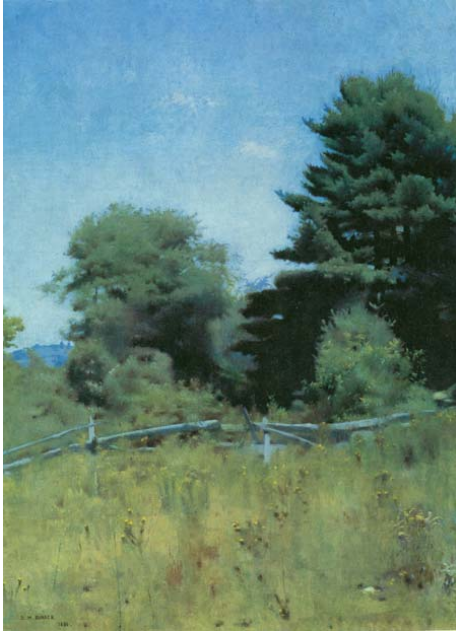
Summer, Montclair (New Jersey Landscape), 1891,
by George Inness
Oil on canvas, 30 1/4 x 45 in.
Collection of Mr. and Mrs. Frank Martucci



The Young Orphan (At Her Ease), 1884
by William Merritt Chase
Oil on canvas, 44 x 42 in.
National Academy Museum, New York.



Arques-la-Bataille, 1885
by John Henry Twachtman
Oil on canvas, 60 x 78 7/8 in.
The Metropolitan Museum of Art, New York.
Morris K. Jesup Fund, 1968



Pines Beyond the Fence, 1886, by Dennis Miller Bunker
Oil on canvas, 28 3/4 x 21 1/4 in.
Private collection



The Home of the Heron, 1893, by George Inness
Oil on canvas, 30 x 45 in. (76.2 x 114.3 cm)
The Art Institute of Chicago. Edward B. Butler Collection



Across the Salt Marshes, Huntington, c. 1905
by Eduard Steichen
Oil on canvas, 15 1/6 x 17 7/8 in. (38.5 x 45.4 cm)
Toledo Museum of Art. Gift of Florence Scott Libbey



Arrangement in Black: Portrait of Señor Pablo de Sarasate, 1884
by James McNeill Whistler
Oil on canvas, 90 x 48 in. (228.6 x 121.9 cm)
Carnegie Museum of Art, Pittsburgh. Purchase